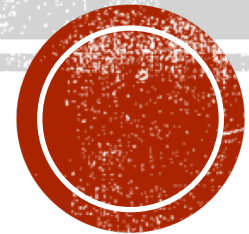


2019 CITIZEN FORESTER FOCUS TREES -- JULY

Southern Magnolia

Ginkgo biloba

Osage-Orange



TODAY'S VOCABULARY

- **MONOECIOUS** – Plant that has both male and female reproductive structures
- **DIOECIOUS** – Plant that is either male and female, but not both.
- **GYMNOSPERM** – ‘Naked seed’. Plants that do not encase seeds/ovules in ovaries. Do not produce flowers or true fruit. (Gingko biloba)
- **ANGIOSPERM** – Flowering plants that encase seeds in ovaries.
- **CATKIN**: Compact, often drooping cluster of reduced, stalkless, and usually unisexual flowers. (Gingko biloba)
- **PISTOL** – Ovule-producing part of a flower (e.g. ‘Female’) (Southern Magnolia)
- **STAMEN** – Pollen producing part of a flower (e.g. ‘Male’) (Southern Magnolia)
- **SEPAL** – One of the outermost series of flower parts, arranged in a ring outside the petals, usually green and leaflike. (Southern Magnolia)



SOUTHERN MAGNOLIA — *Magnolia grandiflora*



Southern Magnolia
Magnolia grandiflora



Copyright © Robert O'Brien

Size: medium to large (up to 100 ft)

Leaves: Semi - evergreen

Growth: slow

Habitat: moist soils, deciduous forests, sun to partial shade. Found naturally in eastern Texas – piney woods.

Life Span: 50 – 100 years



LEAVES — SOUTHERN MAGNOLIA



© Courtney Williams

- Simple, elliptical, 5" – 10" long, alternately attached.
- Thick, leathery
- Shiny green above, paler with rusty hairs below.
- Toothless margins.



TRUNK AND BARK — SOUTHERN MAGNOLIA



Bark is medium to dark grey, thin and smooth when young, large scaly patches with age.

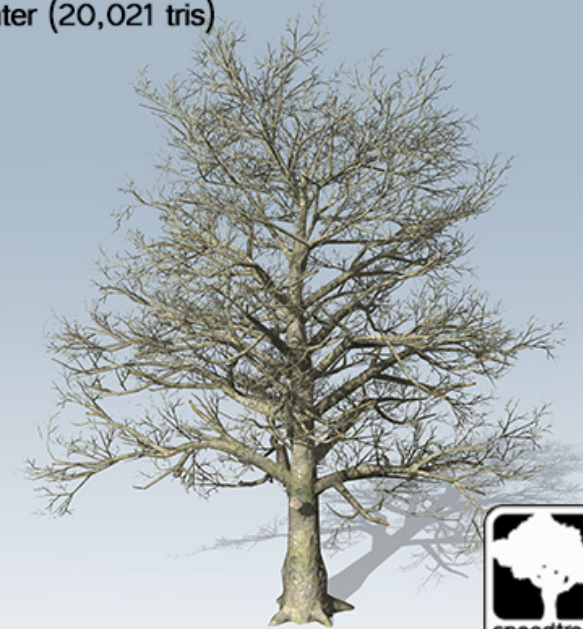
Single straight trunk, large conical crown, low branches.

Summer (24,841 tris)



Southern Magnolia

Winter (20,021 tris)



FLOWER AND FRUIT— SOUTHERN MAGNOLIA



Large, cup-shaped white flowers, 6" 10", solitary, at end of branch. Fragrant.

Produces large, green aggregate, turning red when mature.

Cone-shaped, 3" – 6" long, covered with wooly hairs, splitting open in fall, releasing seeds that hang from slender threads



MAIDENHEAD TREE -- *Ginkgo biloba*



Size: Medium to large, to 50 – 70 feet.

Habitat: Streets and lawns, moist soil, humid temperate regions.

Growth: slow



Leaves

Bark & Trunk



Seeds & Flowers



TRUNK AND BARK — Ginkgo biloba



Straight trunk, open
pyramid-shaped crown.

Becoming wide-spreading
and irregular with age.

Bark is gray, becoming
rough and deeply furrowed.



LEAVES — *Ginkgo biloba*



Deciduous

3" – 5" in clusters on spurs, or alternate 1" – 2" long.

Oddly, fan-shaped, slightly thickened, slightly wavy on broad edge.

Often 2-lobed, with fine, forking parallel veins without midvein.

Dull light green, turning yellow and shedding in autumn.



Ginkgo biloba --SEEDS & FLOWERS



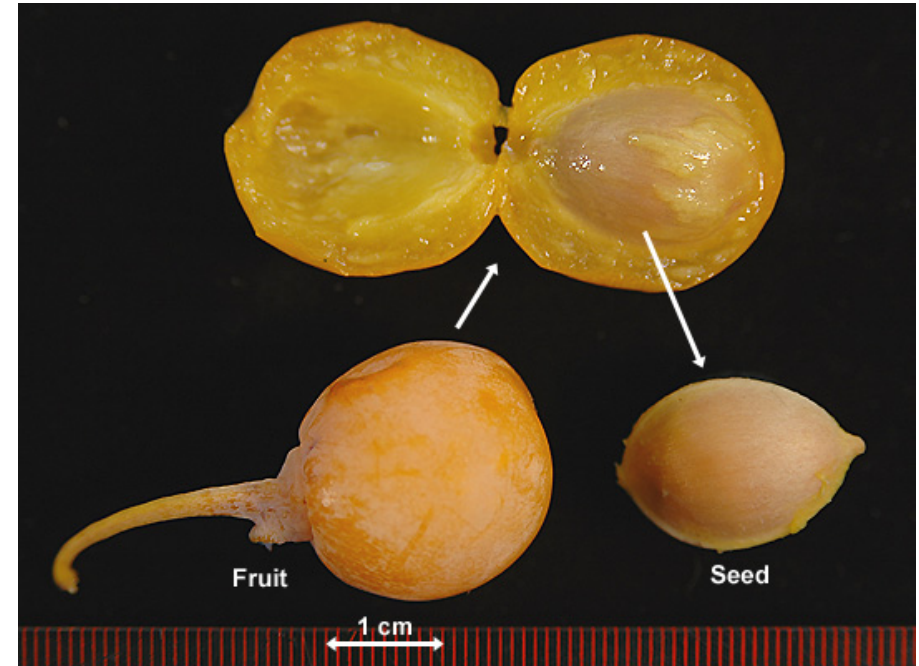
Dioecious --

Female 'flowers' on 1" stalk, solitary with two opposing ovules at end.

Male 'flower' is 1" catkin-like, numerous stamens loosely arranged.



GINGKO BILOBA – FEMALE ‘FRUIT’



Fruit is a seed enclosed in a fleshy, plum-shaped covering, first green, then tan or orange. Messy and malodorous when ripe.



GINGKO BILOBA



OSAGE ORANGE — *Maclura pomefira*



Copyright © Robert O'Brien

a.k.a. Hedge-apple, Horse-apple, Bodark

Size: Medium, to 50 feet.

Habitat: Moist soils of river valleys. Mostly seen in Arkansas, Oklahoma and Blackland Prairies of eastern Texas

Leaves --

Bark & Trunk

Seeds & Flowers





BARK AND TRUNK — OSAGE ORANGE

Gray or brown; thick,
Deeply furrowed into narrow
forking ridges.

Inner bark and roots orange,
separating into thin papery
scales.



TWIGS— OSAGE ORANGE



OSAGE ORANGE -- LEAVES



- Simple, oval, 3" – 5" long, alternately attached
- Long, pointed tip, round to heart-shaped base
- Often wavy margin, no teeth.
- Shiny dark green above, lighter below, lacking hairs



OSAGE ORANGE -- FRUIT & FLOWERS



Fruit: 3-1/2 – 5” diameter, heavy green-yellow ball, hard and fleshy. Contains many brown nutlets.

Dioecious: yellow-green flowers; stamens in small stalked dense spherical heads; pistils with styles in long, conspicuous threads.

